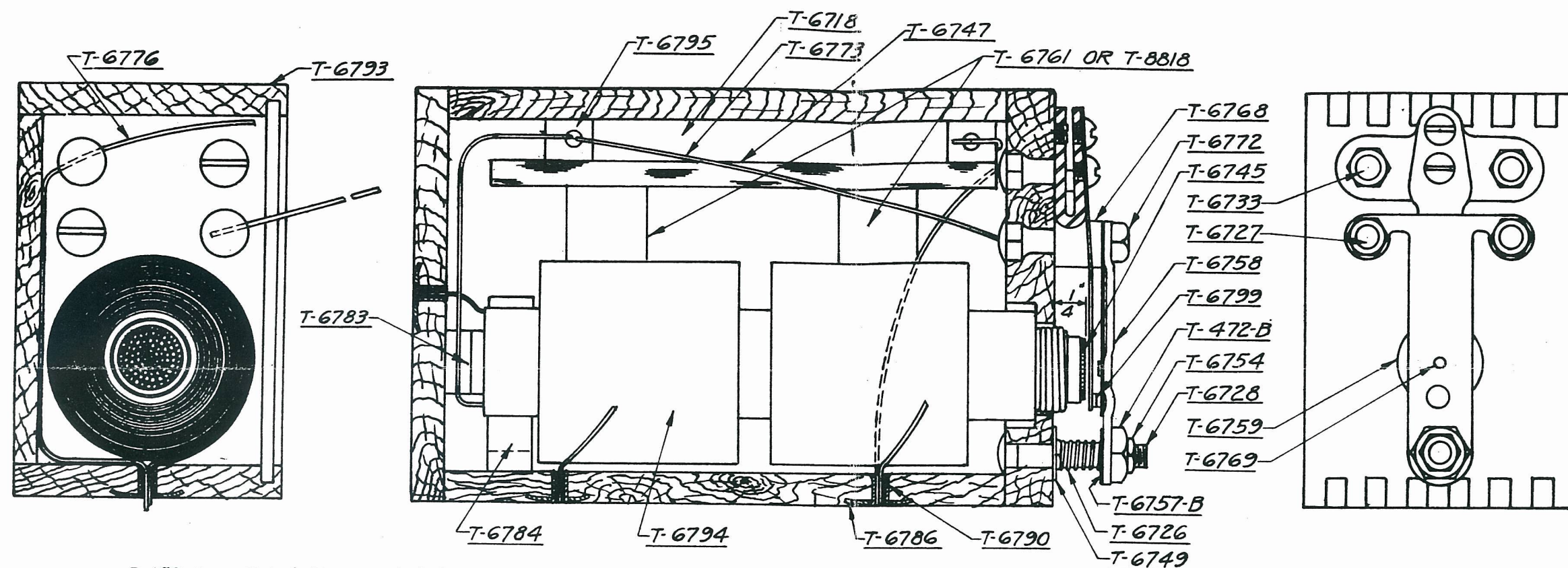


MAY 21-1915
 REVISED
 3-15-22-F.M.
 7-10-22 F.M.



T-472-B	Nut (vibrator bolt)	T-6743	Spring (vibrator cushion)	T-6777	Tinfoil (condenser)
5845	Unit (coil) assembly	6744	Nail (for side of unit)	6778	Tape (primary wire fastener)
6698	Hydrolene .260	6745	Wire (core) for primary	6779	Paper (binding for condenser)
6699	Paraffin	6747	Insulator (glass)	6780	Sticker (secondary coil)
6700	Cover	6749	Washer (vibrator adjusting bolt)	6781	Paper (glassine for condenser)
6702	Bridge (assembly)	6751	Paraffin (crude)	6782	Screw (lower bridge adjusting)
6704	Top (coil unit box)	6752	Paper (primary)	6783	Wedge (coil unit)
6706	Bottom (coil unit box)	6753	Compound (impregnating)	6784	Block (coil unit L)
6707	Back (coil unit box)	6754	Nut (vibrator adjusting bolt lock)	6785	Screw (armature to lower bridge)
6708	Side (coil unit box) rear	6755	Tube (primary)	6786	Washer (contact)
6711	Side (coil unit box) front	6757-B	Vibrator adjusting bolt washer upper.	6790	Rivet (contact washer)
6718	Condenser (spark coil assembly)	6758	Bridge (vibrator upper)	6793	Box (coil unit)
6721	Coil (primary assembly)	6759	Armature (vibrator)	6794	Coil (secondary)
6722	Winding (secondary assembly)	6761	Spacer (condenser & secondary)	6795	Wire (primary)
6723	Rosin	6767	Vibrator cushion spring rivet	6797	Armature (vibrator assembly)
6725	Wax (carnuda)	6768	Collar (vibrator bolt)	6798	Spring (vibrator cushion assy)
6726	Spring (vibrator adjusting bolt)	6769	Rivet (vibrator cushion spring spacer)	6799	Point (contact)
6727	Bolt (vibrator long)	6770	Bridge (vibrator lower)	8801	Wedge (condenser)
6728	Bolt (vibrator adjusting)	6772	Nut (vibrator bolt)	8818	Spacer (condenser & secondary)
6733	Bolt (vibrator short)	6773	Wire (vibrator bolt to condenser)	8882	Bolt (vibrator assembly)
6734	Paste	6774	Terminal (condenser)	8883	Bolt (vibrator assembly)
6736	Bridge (lower)	6775	Glue (colon)		
6737	Vibrator and lower bridge assembly.	6776	Wire (vibrator bolt to contact-washer)		

SK
 2202

SKETCH SHOWING UNIT COMPLETE ALSO NUMBERS & NAMES OF PARTS

SK-2202