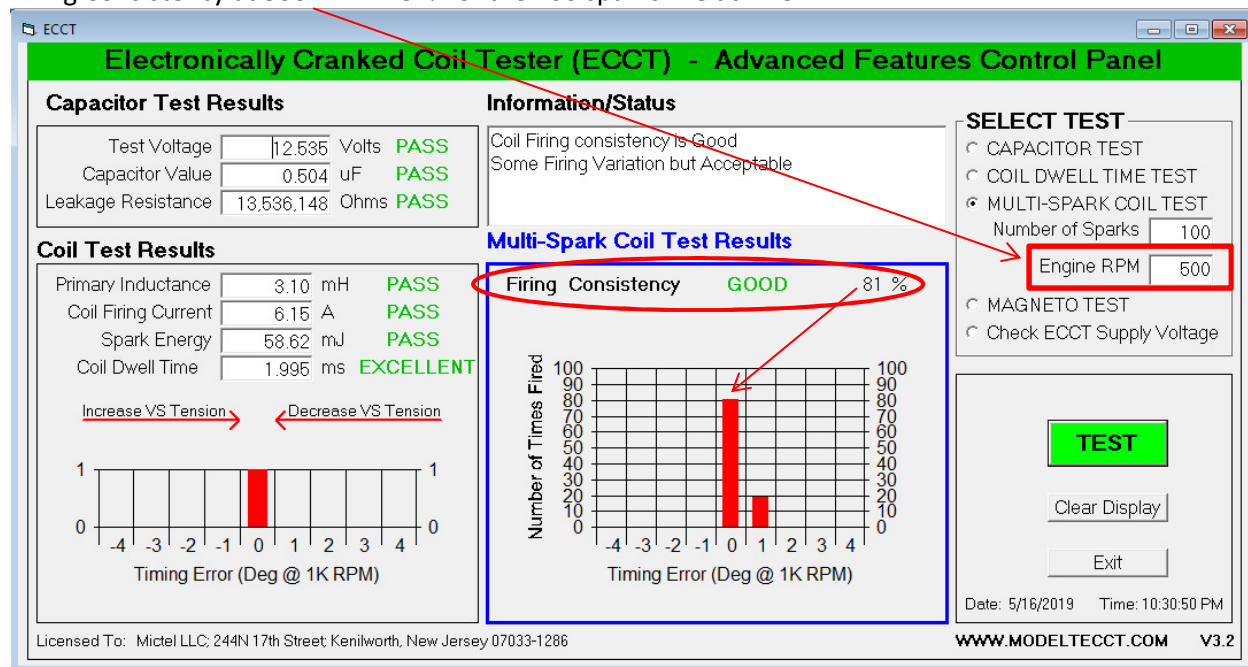


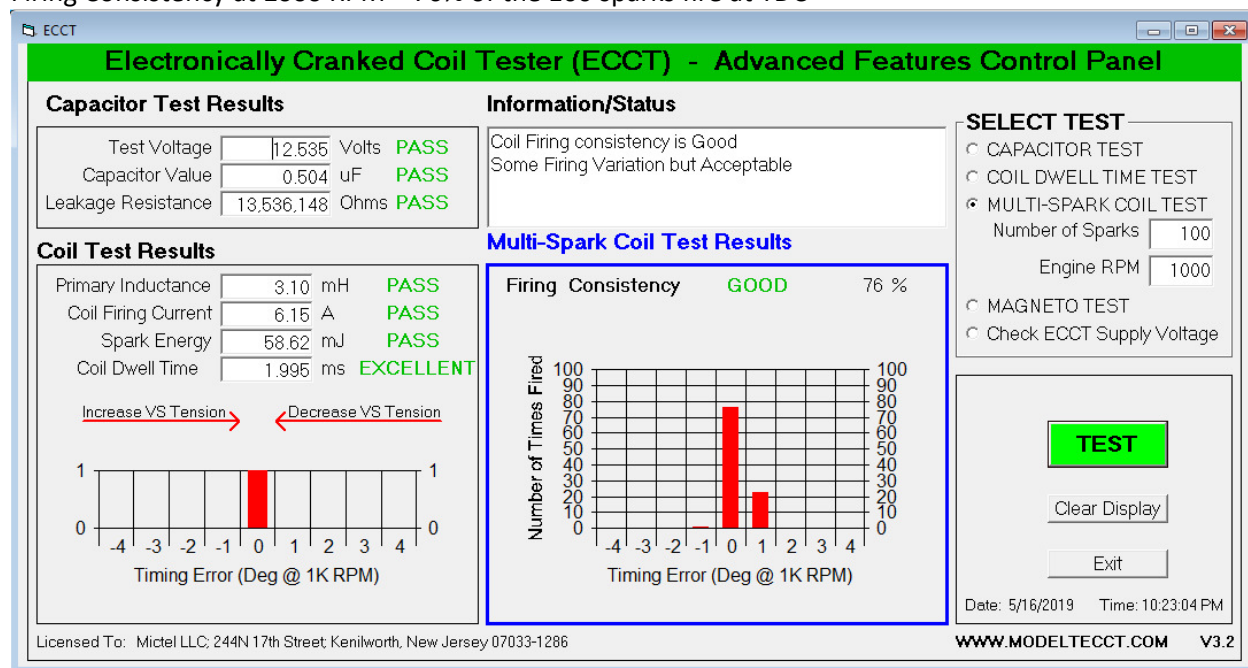
Example of Model T Coil Firing Consistency Degradation as Firing Rate Increases

Note: Coil points have excessive cushion spring travel: ~ 0.020" Specification is 0.005"

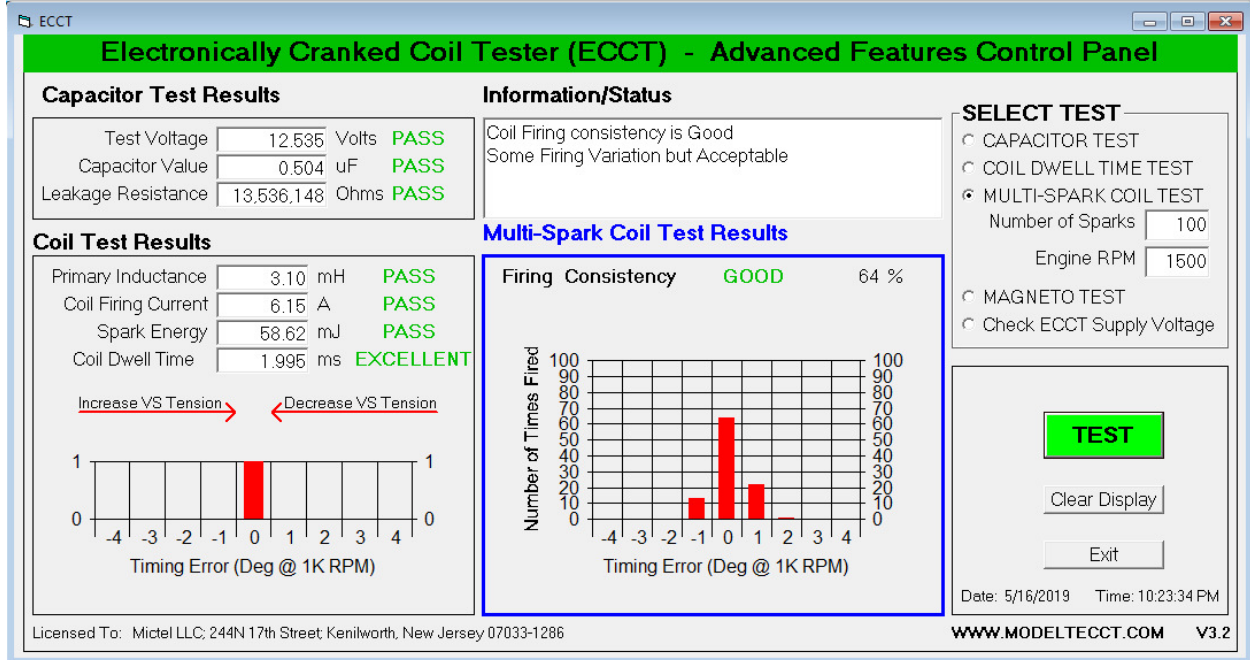
Firing Consistency at **500 RPM** - 81% of the 100 sparks fire at TDC



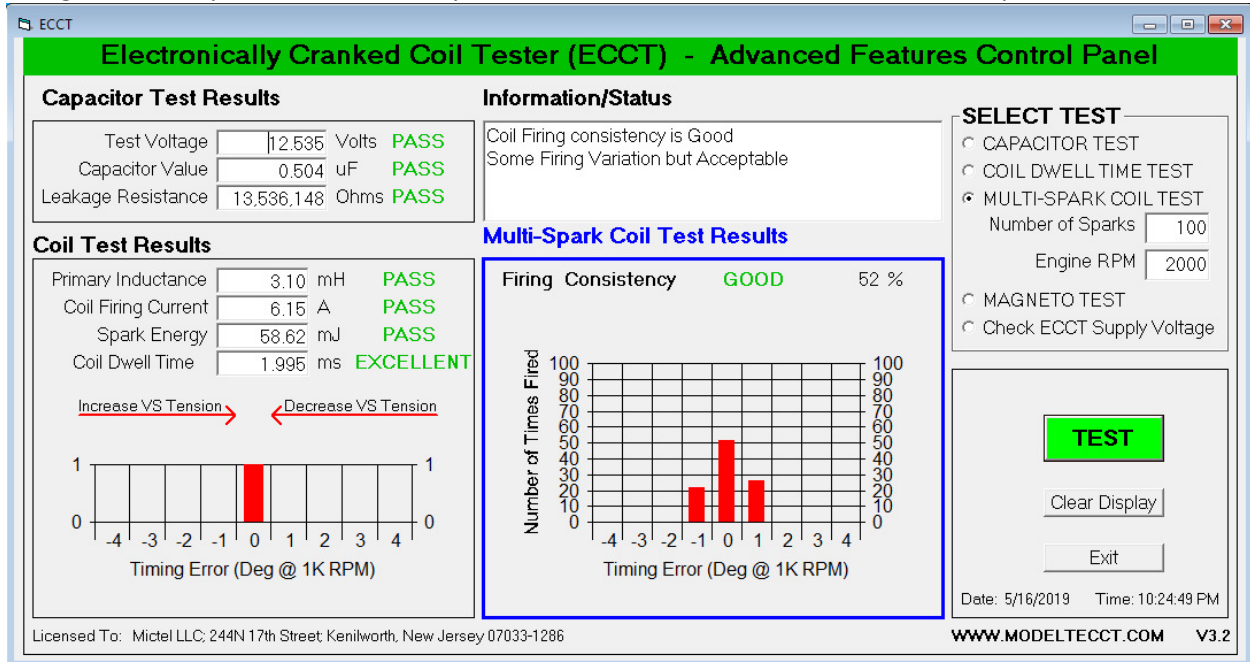
Firing Consistency at **1000 RPM** – 76% of the 100 sparks fire at TDC



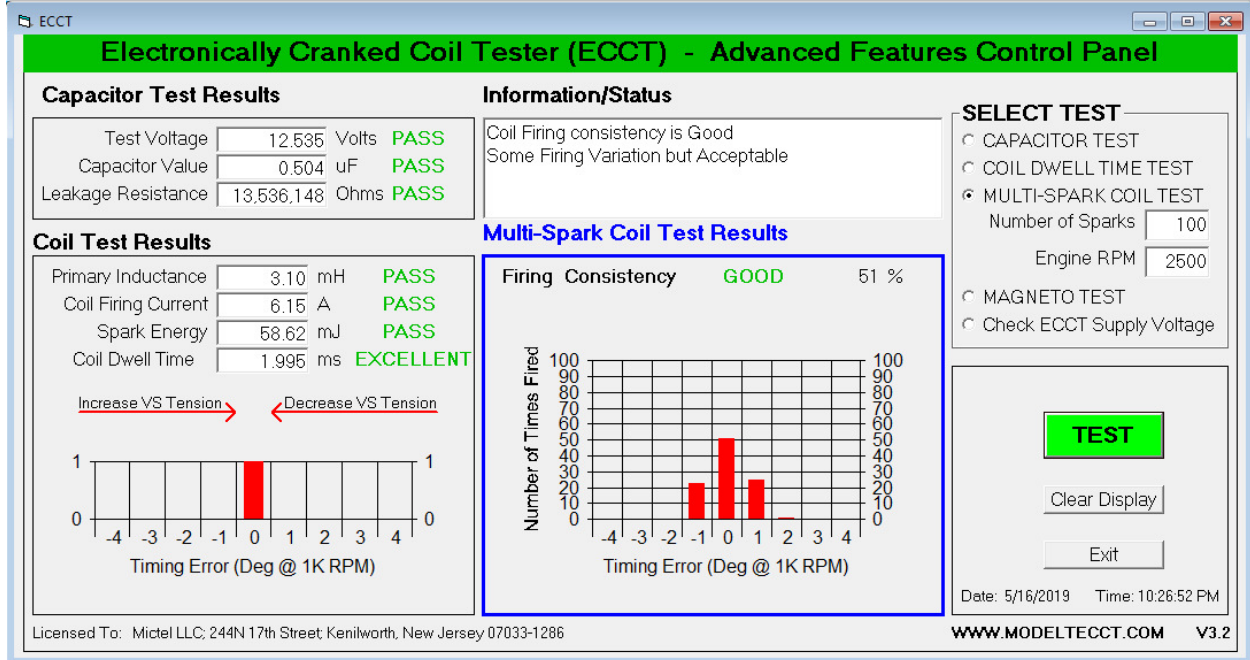
Firing Consistency at **1500 RPM** – Only 64% fire at TDC, the remainder now spread across 4 timing bins



Firing Consistency at **2000 RPM** – Only 52% fire at TDC, the remainder continue to spread



Firing Consistency at **2500 RPM** 51% of 100 fire at TDC, the remainder now spread across 4 timing bins



Firing Consistency at **3000 RPM** – 51% of 100 fire at TDC, the remainder now spread across 5 timing bins

